

# CATÁLOGO DE **CONEXIONES**

*Conexiones que aseguran el flujo perfecto  
Amplia gama en conexiones de BRONCE, PTC y PL.  
Precisión, durabilidad y variedad en un solo lugar.*



*Calidad, stock y confianza  
que marcan la diferencia.*

# ÍNDICE DE CONTENIDO

<b>01</b>	<b>CONEXIONES DE BRONCE</b> AQ P _____	01
<b>02</b>	<b>CONEXIONES DE BRONCE</b> AQ DOT _____	04
<b>03</b>	<b>CONEXIONES DE BRONCE</b> COMPRESIÓN C _____	07
<b>04</b>	<b>CONEXIONES DE BRONCE</b> TUBERÍA P _____	09
<b>05</b>	<b>CONEXIONES DE BRONCE</b> NTA FRENOS DE AIRE _____	11
<b>06</b>	<b>CONEXIONES DE BRONCE MILIMÉTRICAS</b> AQ MILIMÉTRICAS _____	14
<b>07</b>	<b>ADAPTADORES DE BARBAS</b> ADAPTADORES PARA MANGUERAS _____	15
<b>08</b>	<b>CONEXIONES DE BRONCE</b> FLARE 45° _____	16
<b>09</b>	<b>PTC</b> PTC DOT _____	18
<b>10</b>	<b>PLÁSTICO PL</b> PLÁSTICO PUSH _____	21
<b>11</b>	<b>PLÁSTICO PL</b> PLÁSTICO PUSH MILIMÉTRICAS _____	23
<b>12</b>	<b>ACCESORIOS</b> ACCESORIOS Y ADAPTADORES _____	25
<b>13</b>	<b>VÁLVULAS</b> LLAVE DE PASO PARA TANQUE DIÉSEL _____ VÁLVULAS DE BOLA INDUSTRIALES _____	27 28

## AQ52-P Unión de Cruz

Clave	Medida
AQ52-P-2	1/8
AQ52-P-5/32	5/32
AQ52-P-4	1/4
AQ52-P-6	3/8

## AQ62-P Conector Unión

Clave	Medida
AQ62-P-2	1/8
AQ62-P-5/32	5/32
AQ62-P-4	1/4
AQ62-P-6	3/8
AQ62-P-8	1/2

## AQ54-P 45° Codo Macho

Clave	Medida	
AQ54-P-4x2	1/4	1/8
AQ54-P-4x4	1/4	1/4
AQ54-P-6x2	3/8	1/8
AQ54-P-6x4	3/8	1/4
AQ54-P-6x6	3/8	3/8
AQ54-P-8x4	1/2	1/4
AQ54-P-8x6	1/2	3/8
AQ54-P-8x8	1/2	1/2
AQ54-P-10x6	5/8	3/8
AQ54-P-10x8	5/8	1/2

## AQ64-P Tee Unión

Clave	Medida
AQ64-P-2	1/8
AQ64-P-5/32	5/32
AQ64-P-4	1/4
AQ64-P-3	3/16
AQ64-P-6	3/8
AQ64-P-8	1/2
MAQ64-P-8	8MM

## AQ54-PS 45° Codo Macho Giratorio

Clave	Medida	
AQ54-PS-4x2	1/4	1/8
AQ54-PS-4x4	1/4	1/4
AQ54-PS-6x2	3/8	1/8
AQ54-PS-6x4	3/8	1/4
AQ54-PS-6x6	3/8	3/8
AQ54-PS-8x6	1/2	3/8
AQ54-PS-8x8	1/2	1/2

## AQ65-P Codo de Unión

Clave	Medida
AQ65-P-2	1/8
AQ65-P-5/32	5/32
AQ65-P-4	1/4
AQ65-P-6	3/8
AQ65-P-8	1/2

## AQ66-P Conector Hembra

Clave	Medida	
AQ66-P-2x2	1/8	1/8
AQ66-P-5/32	5/32	1/8
AQ66-P-5/32x2	5/32	1/8
AQ66-P-4x2	1/4	1/8
AQ66-P-4x4	1/4	1/4
AQ66-P-6x4	3/8	1/4
AQ66-P-6x6	3/8	3/8

## AQ68-P Conector Macho

Clave	Medida	
AQ68-P-2x0	1/8	10-32
AQ68-P-2x1	1/8	1/16
AQ68-P-2x2	1/8	1/8
AQ68-P-5/32x0	5/32	10-32
AQ68-P-5/32x1	5/32	1/16
AQ68-P-5/32x2	5/32	1/8
AQ68-P-5/32x4	5/32	1/4
AQ68-P-3x0	3/16	10-32
AQ68-P-3x1	3/16	1/16
AQ68-P-3x2	3/16	1/8
AQ68-P-4x0	1/4	10-32
AQ68-P-4x1	1/4	1/16
AQ68-P-4x2	1/4	1/8
AQ68-P-4x4	1/4	1/4
AQ68-P-4x6	1/4	3/8
AQ68-P-6x2	3/8	1/8
AQ68-P-6x4	3/8	1/4
AQ68-P-6x6	3/8	3/8
AQ68-P-6x8	3/8	1/2
AQ68-P-8x4	1/2	1/4
AQ68-P-8x6	1/2	3/8
AQ68-P-8x8	1/2	1/2
MAQ68-P-8X4	8MM	1/4
MAQ68-P-12X8	12MM	1/2

## AQ69-P Codo Macho

Clave	Medida	
AQ69-P-2x2	1/8	1/8
AQ69-P-5/32x1	5/32	1/16
AQ69-P-5/32x2	5/32	1/8
AQ69-P-3x2	3/16	1/8
AQ69-P-4x2	1/4	1/8
AQ69-P-4x4	1/4	1/4
AQ69-P-4x6	1/4	3/8
AQ69-P-6x2	3/8	1/8
AQ69-P-6x4	3/8	1/4
AQ69-P-6x6	3/8	3/8
AQ69-P-8x4	1/2	1/4
AQ69-P-8x6	1/2	3/8
AQ69-P-8x8	1/2	1/2
AQ69-P-10x6	5/8	3/8
AQ69-P-10x8	5/8	1/2

## AQ69-PS Codo Macho Giratorio

Clave	Medida	
AQ69-PS-2x2	1/8	1/8
AQ69-PS-5/32x0	5/32	10-32
AQ69-PS-5/32x2	5/32	1/8
AQ69-PS-5/32x4	5/32	1/4
AQ69-PS-3x2	3/16	1/8
AQ69-PS-4x0	1/4	10-32
AQ69-PS-4x2	1/4	1/8
AQ69-PS-4x4	1/4	1/4
AQ69-PS-4x6	1/4	3/8
AQ69-PS-6x2	3/8	1/8
AQ69-PS-6x4	3/8	1/4
AQ69-PS-6x6	3/8	3/8
AQ69-PS-6x8	3/8	1/2
AQ69-PS-8x4	1/2	1/4
AQ69-PS-8x6	1/2	3/8
AQ69-PS-8x8	1/2	1/2
MAQ69-PS-8X6	8MM	3/8

## AQ71-P Tee Macho



Clave	Medida	
AQ71-P-2x2	1/8	1/8
AQ71-P-4x2	1/4	1/8
AQ71-P-4x4	1/4	1/4
AQ71-P-6x2	3/8	1/8
AQ71-P-6x4	3/8	1/4
AQ71-P-6x6	3/8	3/8

## AQ72-PS Tee Macho Tuerca Giratorio



Clave	Medida	
AQ72-PS-2x2	1/8	1/8
AQ72-PS-5/32x2	5/32	1/8
AQ72-PS-4x2	1/4	1/8
AQ72-PS-4x4	1/4	1/4
AQ72-PS-6x2	3/8	1/8
AQ72-PS-6x4	3/8	1/4
AQ72-PS-6x6	3/8	3/8
AQ72-PS-8x6	1/2	3/8
AQ72-PS-8x8	1/2	1/8

## AQ71-PS Tee Giratorio Macho



Clave	Medida	
AQ71-PS-2x2	1/8	1/8
AQ71-PS-5/32x2	5/32	1/8
AQ71-PS-4x2	1/4	1/8
AQ71-PS-4x4	1/4	1/4
AQ71-PS-6x2	3/8	1/8
AQ71-PS-6x4	3/8	1/4
AQ71-PS-6x6	3/8	3/8
AQ71-PS-8x6	1/2	3/8
AQ71-PS-8x8	1/2	1/8

Estas conexiones suelen contar con un sistema de tipo "Push", lo que significa que permiten una inserción rápida y segura de la manguera. Este mecanismo de "Push" asegura un agarre efectivo de la manguera sin la necesidad de herramientas complicadas.

Aunque son altamente efectivas, las conexiones de bronce AQ carecen de **insertos internos**. Esto puede ser beneficioso en algunas aplicaciones donde se busca una conexión más directa y sin obstrucciones, pero es esencial seleccionar el tipo de conexión adecuado según las necesidades específicas de tu proyecto.

## AQ72-P Tee Macho



Clave	Medida	
AQ72-P-2x2	1/8	1/8
AQ72-P-5/32x2	5/32	1/8
AQ72-P-4x2	1/4	1/8
AQ72-P-4x4	1/4	1/4
AQ72-P-6x2	3/8	1/8
AQ72-P-6x4	3/8	1/4
AQ72-P-6x6	3/8	3/8
AQ72-P-8x6	1/2	3/8



### AQ54-DOT Codo Macho 45° Inserto

Clave	Medida	
AQ54-DOT-4x2	1/4	1/8
AQ54-DOT-4x4	1/4	1/4
AQ54-DOT-6x2	3/8	1/8
AQ54-DOT-6x4	3/8	1/4
AQ54-DOT-6x6	3/8	3/8
AQ54-DOT-6x8	3/8	1/2
AQ54-DOT-8x4	1/2	1/4
AQ54-DOT-8x6	1/2	3/8
AQ54-DOT-8x8	1/2	1/2
AQ54-DOT-10x6	5/8	3/8
AQ54-DOT-10x8	5/8	1/2

### AQ54-DOTS Codo Macho 45° Tuerca Giratoria

Clave	Medida	
AQ54-DOTS-4x2	1/4	1/8
AQ54-DOTS-4x4	1/4	1/4
AQ54-DOTS-6x2	3/8	1/8
AQ54-DOTS-6x4	3/8	1/4
AQ54-DOTS-6x6	3/8	3/8
AQ54-DOTS-6x8	3/8	1/2
AQ54-DOTS-8x4	1/2	1/4
AQ54-DOTS-8x6	1/2	3/8
AQ54-DOTS-8x8	1/2	1/2
AQ54-DOTS-10x6	5/8	3/8
AQ54-DOTS-10x8	5/8	1/2

### AQ62-DOT Conector Unión Inserto

Clave	Medida
AQ62-DOT-5/32	5/32
AQ62-DOT-3	3/16
AQ62-DOT-4	1/4
AQ62-DOT-6	3/8
AQ62-DOT-8	1/2
AQ62-DOT-10	5/8
AQ62-DOT-12	3/4

### AQ64-DOT Tee Unión

Clave	Medida
AQ64-DOT-4	1/4
AQ64-DOT-6	3/8
AQ64-DOT-8	1/2
AQ64-DOT-10	5/8
AQ64-DOT-12	3/4

### AQ65-DOT Codo Unión Inserto

Clave	Medida
AQ65-DOT-4	1/4
AQ65-DOT-6	3/8
AQ65-DOT-8	1/2

## AQ66- DOT Recto-Hembra

Clave	Medida	
AQ66-DOT-4x2	1/4	1/8
AQ66-DOT-4x4	1/4	1/4
AQ66-DOT-6x4	3/8	1/4
AQ66-DOT-6x6	3/8	3/8

## AQ69-DOT Codo Macho-Inserto

Clave	Medida	
AQ69-DOT-3x2	3/16	1/8
AQ69-DOT-4x2	1/4	1/8
AQ69-DOT-4x4	1/4	1/4
AQ69-DOT-4x6	1/4	3/8
AQ69-DOT-5/32x1	5/32	1/16
AQ69-DOT-5/32x2	5/32	1/8
AQ69-DOT-6x2	3/8	1/8
AQ69-DOT-6x4	3/8	1/4
AQ69-DOT-6x6	3/8	3/8
AQ69-DOT-6x8	3/8	1/2
AQ69-DOT-8x4	1/2	1/4
AQ69-DOT-8x6	1/2	3/8
AQ69-DOT-8x8	1/2	1/2
AQ69-DOT-10x6	5/8	3/8
AQ69-DOT-10x8	5/8	1/2
AQ69-DOT-12x8	3/4	1/2
AQ69-DOT-12x12	3/4	3/4

## AQ68-DOT Conector Macho-Inserto

Clave	Medida	
AQ68-DOT-5/32x1	5/32	1/16
AQ68-DOT-5/32x2	5/32	1/8
AQ68-DOT-3x2	3/16	1/8
AQ68-DOT-4x1	1/4	1/16
AQ68-DOT-4x2	1/4	1/8
AQ68-DOT-4x4	1/4	1/4
AQ68-DOT-4x6	1/4	3/8
AQ68-DOT-6x2	3/8	1/8
AQ68-DOT-6x4	3/8	1/4
AQ68-DOT-6x6	3/8	3/8
AQ68-DOT-6x8	3/8	1/2
AQ68-DOT-8x4	1/2	1/4
AQ68-DOT-8x6	1/2	3/8
AQ68-DOT-8x8	1/2	1/2
AQ68-DOT-10x6	5/8	3/8
AQ68-DOT-10x8	5/8	1/2
AQ68-DOT-10x12	5/8	3/4
AQ68-DOT-12x8	3/4	1/2
AQ68-DOT-12x12	3/4	3/4

### AQ69-DOTS Codo Macho Tuerca Giratoria-Inserto



Clave	Medida	
AQ69-DOTS-5/32x2	5/32	1/8
AQ69-DOTS-4x2	1/4	1/8
AQ69-DOTS-4x4	1/4	1/4
AQ69-DOTS-4x6	1/4	3/8
AQ69-DOTS-6x2	3/8	1/8
AQ69-DOTS-6x4	3/8	1/4
AQ69-DOTS-6x6	3/8	3/8
AQ69-DOTS-6x8	3/8	1/2
AQ69-DOTS-8x4	1/2	1/4
AQ69-DOTS-8x6	1/2	3/8
AQ69-DOTS-8x8	1/2	1/2
AQ69-DOTS-10x6	5/8	3/8
AQ69-DOTS-10x8	5/8	1/2
AQ69-DOTS-12x8	3/4	1/2
AQ69-DOTS-12x12	3/4	3/4
AQ69-DOTS-4xM12	1/4	M12
AQ69-DOTS-4xM16	1/4	M16
AQ69-DOTS-6xM12	3/8	M12
AQ69-DOTS-8xM16	1/2	M16
AQ69-DOTS-8xM22	1/2	M22



### AQ71-DOT Tee Macho-Inserto

Clave	Medida	
AQ71-DOT-4x2	1/4	1/8
AQ71-DOT-4x4	1/4	1/4
AQ71-DOT-6x4	3/8	1/4
AQ71-DOT-6x6	3/8	3/8
AQ71-DOT-8x6	1/2	3/8

### AQ71-DOTS Tee Macho Tuerca Giratoria-Inserto



Clave	Medida	
AQ71-DOTS-4x2	1/4	1/8
AQ71-DOTS-4x4	1/4	1/4
AQ71-DOTS-6x4	3/8	1/4
AQ71-DOTS-6x6	3/8	3/8
AQ71-DOTS-8x6	1/2	3/8
AQ71-DOTS-8x8	1/2	1/2

### AQ72-DOT Tee Macho-Inserto



Clave	Medida	
AQ72-DOT-4x2	1/4	1/8
AQ72-DOT-4x4	1/4	1/4
AQ72-DOT-6x4	3/8	1/4
AQ72-DOT-6x6	3/8	3/8
AQ72-DOT-8x4	1/2	1/4
AQ72-DOT-8x6	1/2	3/8

### AQ72-DOTS Tee Macho Tuerca Giratoria-Inserto



Clave	Medida	
AQ72-DOTS-4x2	1/4	1/8
AQ72-DOTS-4x4	1/4	1/4
AQ72-DOTS-6x4	3/8	1/4
AQ72-DOTS-6x6	3/8	3/8
AQ72-DOTS-8x4	1/2	1/4
AQ72-DOTS-8x6	1/2	3/8
AQ72-DOTS-8x8	1/2	1/2

### AQ77-DOT Tee Hembra-Inserto



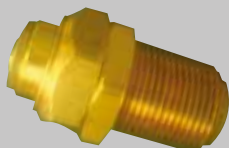
Clave	Medida	
AQ77-DOT-4x4	1/4	1/4
AQ77-DOT-6x4	3/8	1/4

### AQ79-DOT Tee Unión-Reducción



Clave	Medida	
AQ79-DOT-6X4	3/8	1/4

### AQ82-DOT Unión Mampara (para muros)



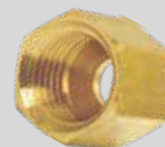
Clave	Medida
AQ82-DOT-4	1/4
AQ82-DOT-6	3/8
AQ82-DOT-8	1/2
AQ82-DOT-10	5/8

### 60 Barril Compresión



Clave	Medida
60C2	1/8
60C3	3/16
60C4	1/4
60C5	5/16
60C6	3/8
60C8	1/2
60C10	5/8
60C12	3/4

### 61 Tuerca de Compresión



Clave	Medida
61C2	1/8
61C3	3/16
61C4	1/4
61C5	5/16
61C6	3/8
61C8	1/2
61C10	5/8
61C12	3/4

### 62 Unión de Compresión



Clave	Medida
62C2	1/8
62C3	3/16
62C4	1/4
62C5	5/16
62C6	3/8
62C8	1/2
62C10	5/8
62C12	3/4

### 62 CONEXION BRONCE UNION

Clave	Medida
62P2	1/8
62P4	1/4
62P5	5/16
62P6	3/8
62P8	1/2

### 68 CONEXION BRONCE RECTO

Clave	Medida	
68P22	1/8	1/8
68P41	1/4	1/16
68P42	1/4	1/8
68P44	1/4	1/4
68P46	1/4	3/8
68P62	3/8	1/8
68P64	3/8	1/4
68P66	3/8	3/8
68P86	1/2	3/8

### 68 Conector Macho de Compresión Recto

Clave	Medida	
68C21	1/8	1/16
68C22	1/8	1/8
68C5/321	5/32	1/16
68C5/322	5/32	1/8
68C32	3/16	1/8
68C42	1/4	1/8
68C44	1/4	1/4
68C46	1/4	3/8
68C52	5/16	1/8
68C54	5/16	1/4
68C56	5/16	3/8
68C62	3/8	1/8
68C64	3/8	1/4
68C66	3/8	3/8
68C68	3/8	1/2
68C84	1/2	1/4
68C86	1/2	3/8
68C88	1/2	1/2
68C812	1/2	3/4
68C106	5/8	3/8
68C108	5/8	1/2
68C1012	5/8	3/4
68C128	3/4	1/2
68C1212	3/4	3/4

### 164 TEE UNION

Clave	Medida
164P4	1/4
164P6	3/8
164P8	1/2

### 169 CODO 90°

Clave	Medida	
169P44	1/4	1/4
169P46	1/4	3/8
169P64	3/8	1/4
169P42	1/4	1/8
169P62	3/8	1/8
169P66	3/8	3/8

## 169 Codo Macho de Compresión



Clave	Medida	
169C22	1/8	1/8
169C32	3/16	1/8
169C34	3/16	1/4
169C42	1/4	1/8
169C44	1/4	1/4
169C46	1/4	3/8
169C52	5/16	1/8
169C54	5/16	1/4
169C56	5/16	3/8
169C58	5/16	1/2
169C62	3/8	1/8
169C64	3/8	1/4
169C66	3/8	3/8
169C68	3/8	1/2
169C84	1/2	1/4
169C86	1/2	3/8
169C88	1/2	1/2
169C106	5/8	3/8
169C108	5/8	1/2
169C1012	5/8	3/4
169C128	3/4	1/2
169C1212	3/4	3/4

## 171 Tee Macho Lateral de Compresión



Clave	Medida	
171C32	3/16	1/8
171C42	1/4	1/8
171C44	1/4	1/4
171C64	3/8	1/4
171C66	3/8	3/8
171C86	1/2	3/8
171C108	5/8	1/2

## 172 Tee Macho Centro de Compresión



Clave	Medida	
172C32	3/16	1/8
172C42	1/4	1/8
172C44	1/4	1/4
172C52	5/16	1/8
172C62	3/8	1/8
172C64	3/8	1/4
172C66	3/8	3/8
172C86	1/2	3/8
172C108	5/8	1/2

### 207ACBH Cople Manpara

Clave	Medida
207ACBH2	1/8
207ACBH4	1/4
207ACBH6	3/8
207ACBH8	1/2

### 207P Cople Unión

Clave	Medida
207P2	1/8
207P4	1/4
207P6	3/8
207P8	1/2
207P12	3/4

### 207P Cople Unión Combinada

Clave	Medidas	
207P42	1/4	1/8
207P62	3/8	1/8
207P64	3/8	1/4
207P84	1/2	1/4
207P86	1/2	3/8
207P126	3/4	3/8
207P128	3/4	1/2

### 222P Conector Bronce Reducción Campana

Clave	Medida	
222P22	1/8	1/8
222P42	1/4	1/8
222P44	1/4	1/4
222P62	3/8	1/8
222P64	3/8	1/4
222P66	3/8	3/8
222P84	1/2	1/4
222P86	1/2	3/8
222P88	1/2	1/2
222P126	3/4	3/8
222P128	3/4	1/2
222P1212	3/4	3/4

### 219P TAPÓN DRY - SEAL

Clave	Medida
219P2	1/8
219P4	1/4
219P6	3/8
219P8	1/2

## 113B Niple Largo

Clave	Medida	
113B-02-24	1/8	1 1/2
113B-02-32	1/8	2
113B-02-40	1/8	2 1/2
113B-02-48	1/8	3
113B-02-56	1/8	3 1/2
113B-04-24	1/4	1 1/2
113B-04-32	1/4	2
113B-04-40	1/4	2 1/2
113B-04-48	1/4	3
113B-04-56	1/4	3
113B-06-24	3/8	1 1/2
113B-06-32	3/8	2
113B-06-40	3/8	2 1/2
113B-06-48	3/8	3
113B-08-32	1/2	2
113B-08-40	1/2	2 1/2
113B-08-48	1/2	3
113B-08-56	1/2	3 1/2

## 209P Reducción Bushing

Clave	Medida	
209P42	1/4	1/8
209P62	3/8	1/8
209P64	3/8	1/4
209P82	1/2	1/8
209P84	1/2	1/4
209P86	1/2	3/8
209P124	3/4	1/4
209P126	3/4	3/8
209P128	3/4	1/2
209P164	1	1/4
209P166	1	3/8
209P168	1	1/2
209P1612	1	3/4

## TUERCA BRONCE NPT

Clave	Medida
111B 4	1/4
111B 6	3/8
111B 8	1/2

## 109B TAPÓN NPT

Clave	Medida
109B2	1/8
109B4	1/4
109B6	3/8
109B8	1/2
109B12	3/4

## 216P Niple Hexagonal

Clave	Medida	
216P2	1/8	1/8
216P4	1/4	1/4
216P-4-2	1/4	1/8
216P6	3/8	3/8
216P62	3/8	1/8
216P-6-4	3/8	1/4
216P-8	1/2	1/4
216P-8-4	1/2	1/4
216P86	1/2	3/8
216P88	1/2	1/2
216P12	1/8	1/8
216P-12-8	3/4	1/2
216P16	1	1

## 218P Tapón Macho Hexagonal

Clave	Medida
218P2	1/8
218P4	1/4
218P6	3/8
218P8	1/2
218P12	3/4

Sujetos a disponibilidad

[www.trh.com.mx](http://www.trh.com.mx)

THE BUSINESS  
JOIN BETTER

GRUPO TRH

ROSCA TUBERÍA

CONEXIONES

11

### 1200P Codo Unión 90°



Clave	Medida	
1200P2	1/8	1/8
1200P4	1/4	1/4
1200P6	3/8	3/8
1200P8	1/2	1/2

### 1202P Codo Niple 90°



Clave	Medida	
1202P1212	1/16	1/8
1202P22	1/8	1/8
1202P42	1/4	1/8
1202P44	1/4	1/4
1202P66	3/8	3/8
1202P68	3/8	1/2
1202P88	1/2	1/2
1202P128	3/4	1/2
1202P212	3/4	3/4

### 1203P 90° Tee Unión



Clave	Medida	
1203P2	1/8	1/8
1203P4	1/4	1/4
1203P6	3/8	3/8
1203P8	1/2	1/2
1203P12	3/4	3/4

### 1205P Cruz Unión



Clave	Medida
1205P2	1/8
1205P4	1/4
1205P6	3/8
1205P8	1/2

### 108B Tapón Hembra



Clave	Medida
108A-2	1/8
108P4	1/4
108P6	3/8
108P8	1/2
108P12	3/4

### 1214P Codo Niple 45°



Clave	Medida	
1214P22	1/8	1/8
1214P44	1/4	1/4
1214P66	3/8	3/8
1214P88	1/2	1/2

### 2224P Tee Hembra Macho al Centro



Clave	Medida
2224P2	1/8
2224P4	1/4
2224P6	3/8
2224P8	1/2
2224P12	3/4

### 2225P Tee Niple Lateral



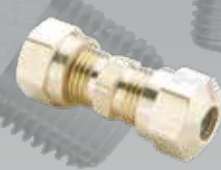
Clave	Medida
2225P2	1/8
2225P4	1/4
2225P6	3/8
2225P8	1/2
2225P12	3/4

## 179-NTA Codo Macho 45° Compresión



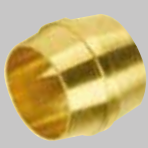
Clave	Medida	
179NTA42	1/4	1/8
179NTA44	1/4	1/4
179NTA62	3/8	1/8
179NTA64	3/8	1/4
179NTA66	3/8	3/8
179NTA68	3/8	1/2
179NTA84	1/2	1/4
179NTA86	1/2	3/8
179NTA88	1/2	1/2
179NTA106	5/8	3/8
179NTA108	5/8	1/2
179NTA128	3/4	1/2

## 62-NTA Unión de Compresión



Clave	Medida
62NTA4	1/4
62NTA6	3/8
62NTA8	1/2
62NTA10	5/8
62NTA12	3/4

## 60-NTA Barril de Compresión



Clave	Medida
60NTA4	1/4
60NTA6	3/8
60NTA8	1/2
60NTA10	5/8
60NTA12	3/4

## 63-NTA Inserto



Clave	Medida
63NTA4	1/4
63NTA6	3/8
63NTA8	1/2
63NTA10	5/8
63NTA12	3/4

## 61-NTA Tuerca de Compresión



Clave	Medida
61NTA4	1/4
61NTA6	3/8
61NTA8	1/2
61NTA10	5/8
61NTA12	3/4

## 164-NTA Tee Unión



Clave	Medida
164NTA4	1/4
164NTA6	3/8
164NTA8	1/2
164NTA10	5/8

## 165-NTA Codo Unión 90°



Clave	Medida
165NTA8	1/2

### 66-NTA Conector Hembra de Compresión

Clave	Medida	
66NTA42	1/4	1/8
66NTA44	1/4	1/4
66NTA62	3/8	1/8
66NTA64	3/8	1/4
66NTA66	3/8	3/8
66NTA86	1/2	3/8
66NTA88	1/2	1/2
66NTA106	5/8	3/8
66NTA108	5/8	1/2
66NTA812	?	?

### 68-NTA Conector Macho de Compresión

Clave	Medida	
68NTA42	1/4	1/8
68NTA44	1/4	1/4
68NTA46	1/4	3/8
68NTA62	3/8	1/8
68NTA64	3/8	1/4
68NTA66	3/8	3/8
68NTA68	3/8	1/2
68NTA84	1/2	1/4
68NTA86	1/2	3/8
68NTA88	1/2	1/2
68NTA106	5/8	3/8
68NTA108	5/8	1/2
68NTA128	3/4	1/2
68NTA812	1/2	3/4
68NTA1012	5/8	3/4
68NTA1212	3/4	3/4

### 169-NTA Codo Macho Compresión

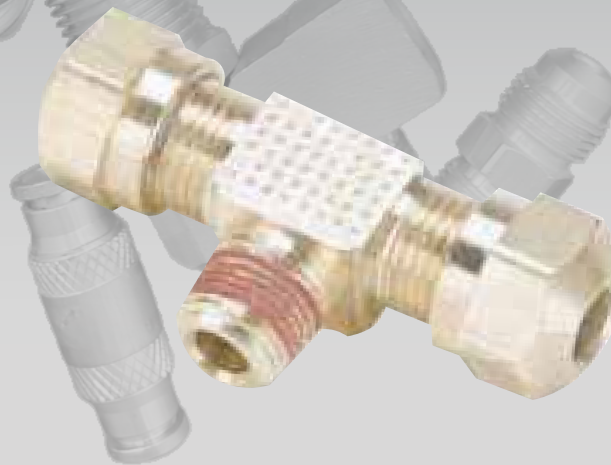
Clave	Medida	
169NTA42	1/4	1/8
169NTA44	1/4	1/4
169NTA46	1/4	3/8
169NTA62	3/8	1/8
169NTA64	3/8	1/4
169NTA66	3/8	3/8
169NTA68	3/8	1/2
169NTA84	1/2	1/4
169NTA86	1/2	3/8
169NTA88	1/2	1/2
169NTA106	5/8	3/8
169NTA108	5/8	1/2
169NTA128	3/4	1/2
169NTA1212	3/4	3/4

### 171-NTA Tee Macho Lateral Compresión

Clave	Medida	
171NTA42	1/4	1/8
171NTA44	1/4	1/4
171NTA62	3/8	1/8
171NTA64	3/8	1/4
171NTA66	3/8	3/8
171NTA86	1/2	3/8
171NTA88	1/2	1/2
171NTA108	5/8	1/2

## 172-NTA Tee Macho Centro Compresión

Clave	Medida	
172NTA42	1/4	1/8
172NTA44	1/4	1/4
172NTA62	3/8	1/8
172NTA64	3/8	1/4
172NTA66	3/8	3/8
172NTA86	1/2	3/8
172NTA88	1/2	1/2
172NTA108	5/8	1/2



## Conector Manguera Macho



Clave	Mang	Tub
4LOC2RMPX	1/4	1/8
4LOC4RMPX	1/4	1/4
4LOC6RMP	1/4	3/8
6LOC2RMPX	3/8	1/8
6LOC4RMPX	3/8	1/4
6LOC6RMP	3/8	3/8
6LOC8RMP	3/8	1/2
8LOC4RMP	1/2	1/4
8LOC6RMP	1/2	3/8
8LOC8RMPX	1/2	1/2
8LOC12RMP	1/2	3/4
10LOC6RMPX	5/8	3/8
10LOC8RMPX	5/8	1/2
12LOC8RMP	3/4	1/2
12LOC12RMP	3/4	3/4

## Conector Manguera Hembra



Clave	Mang	Tub
4LOC4FP	1/4	1/4
4LOC6FP	1/4	3/8
6LOC4FP	3/8	1/4
6LOC6FP	3/8	3/8
8LOC8FP	1/2	1/2

## Codo 90° Espiga



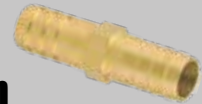
Clave	Conexion	
4LOC2MP90	1/4	1/8
4LOC4MP90	1/4	1/4
6LOC4MP90	3/8	1/4
6LOC6MP90	3/8	3/8
8LOC4MP90	1/2	1/4
8LOC6MP90	1/2	3/8
8LOC8MP90	1/2	1/2

## 29JS-Adaptadores de Barbas Serie 29 (37° Push Lock)



Clave	Mang	Tub
4LOC4RFJX	1/4	1/4
4LOC5RFJX	1/4	5/16
4LOC6RFJX	1/4	3/8
4LOC8RFJX	1/4	1/2
5LOC4RFJX	5/16	1/4
5LOC5RFJX	5/16	5/16
6LOC6RFJX	3/8	3/8
6LOC8RFJX	3/8	1/2
8LOC8RFJX	1/2	1/2
8LOC10RFJX	1/2	5/8
10LOC-8RFJX	5/8	3/8
10LOC10RFJX	5/8	5/8
12LOC12RFJX	3/4	3/4

## Conector Manguera Unión



Clave	Mang	Tub
4LOC4RHM	1/4	1/4
4LOC6RHM	1/4	3/8
5LOC5RHM	5/16	5/16
6LOC6RHM	3/8	3/8
6LOC8RHM	3/8	1/2
8LOC8RHM	1/2	1/2
10LOC10RHM	5/8	5/8
12LOC12RHM	3/4	3/4

## Tee Union Espiga LOC-TEE



Clave	Conexion
LOC-TEE 1/8	1/8
LOC-TEE 3/16	3/16
LOC-TEE 1/4	1/4
LOCTEE 5/16	5/16
LOCTEE 3/8	3/8
LOC-TEE 1/2	1/2
LOCTEE 5/8	5/8
LOCTEE 3/4	3/4

### 41FS Tuerca Corta Flare

Clave	Medida
41FS3	3/16
41FS4	1/4
41FS5	5/16
41FS6	3/8
41FS8	1/2

### 46F Conector Hembra-Macho Flare

Clave	Mang	Tub
46F32	3/16	1/8
46F42	1/4	1/8
46F44	1/4	1/4
46F52	5/16	1/8
46F54	5/16	1/4
46F56	5/16	3/8
46F62	3/8	1/8
46F64	3/8	1/4
46F66	3/8	3/8
46F68	3/8	1/2
46F84	1/2	1/4
46F86	1/2	3/8
46F88	1/2	1/2
46F612	3/8	3/4
46F812	1/2	3/4
46F108	5/8	1/2
46F1012	5/8	3/4
46F1212	3/4	3/4

### 42F Unión Flare

Clave	Medida	
42F3	3/6	
42F4	1/4	
42F5	5/16	
42F6	3/8	
42F8	1/2	
42F10	5/8	
42F12	3/4	
42F54	5/16	1/4
42F65	3/8	5/16
42F86	1/2	3/8

### 42F90 ? Flare

Clave	Medida	
42F90-5	5/16	5/16
42F90-54	5/16	1/8



### 48F Conector Macho Flare

Clave	Medida	
48F22	1/8	1/8
48F42	1/4	1/8
48F44	1/4	1/4
48F46	1/4	3/8
48F48	1/4	1/2
48F52	5/16	1/8
48F54	5/16	1/4
48F56	5/16	3/8
48F58	5/16	1/2
48F62	3/8	1/8
48F64	3/8	1/4
48F66	3/8	3/8
48F68	3/8	1/2
48F84	1/2	1/4
48F86	1/2	3/8
48F88	1/2	1/2
48F812	1/2	3/4
48F104	5/8	1/4
48F106	5/8	3/8
48F108	5/8	1/2
48F128	3/4	1/2
48F1012	5/8	3/4
48F1212	3/4	3/4



### 144 TEE UNION FLARE

Clave	Medida
144F4	1/4
144F5	5/16
144F6	3/8
144F8	1/2
144F10	5/8
144F12	3/4

## 32PTC Unión Recta

Clave	Medida	
32PTC-4	1/4	
32PTC-6	3/8	
32PTC-6-4	3/8	1/4
32PTC-8	1/2	
32PTC-10	5/8	
32PTC-12	3/4	

## 222P Reducción Campana

Clave	Medida	
222P-2-M110	1/8	10MM
222P-4-M112	1/4	12MM
222P-2-M14	1/8	14MM
222P-6-M116	3/8	16MM
222P-6-M22	3/8	22MM
222P-8-M122	1/2	22MM
222P-8-M127	1/2	27MM

## 68PTC Conexión Recta



**Estandar**

Clave	Medida	
68PTC-6-4	3/8	1/4
68PTC-6-6	3/8	3/8
68PTC-8-4	1/2	1/4
68PTC-8-6	1/2	3/8
68PTC-4-M12	1/4-M12x1.5	
68PTC-4-M16	1/4-M16x1.5	
68PTC-4-MA22	1/4-MA22x1.5	
68PTC-6-M12	3/8-M12x1.5	
68PTC-6-M16	3/8-M16x1.5	
68PTC-6-M22	3/8-M22x1.5	
68PTC-8-MA12	1/2-MA12x1.5	
68PTC-8-MA16	1/2-MA16x1.5	
68PTC-8-MA22	1/2-MA22x1.5	
68PTC-10-MA12	5/8-MA12x1.5	
68PTC-10-MA16	5/8-MA16x1.5	
68 PTC-10-MA22	5/8-MA22x1.5	

## 362PTC Unión Mixta "Y"



Clave	Medida		
362PTC-4	1/4		
362PTC-6	3/8		
362PTC-8	1/2		
362PTC-4-6-8	1/4	3/8	1/2
362PTC-6-4-6	3/8	1/4	3/8
362PTC-8-8-6	1/2	1/2	3/8

## 364PTC Tee Unión



Clave	Medida		
364PTC-4	1/4		
364PTC-6	3/8		
364PTC-6-6-4	3/8	3/8	1/4
364PTC-8	1/2		
364PTC-10	5/8		

### 365PTC Codo Unión 90°

Clave	Medida
365PTC-6	3/8
365PTC-8	1/2

### 371PTCSP

Clave	Medida		
371PTCSP-4-4	1/4		1/4
371PTCSP-4-6	1/4		3/8
371PTCSP-6-4-6	3/8	1/4	3/8
371PTCSP-6-6	3/8		3/8
371PTCSP-8-4-8	1/2	1/4	1/2

### 369PTCR Unión



Clave	Medida
369PTCR-4-MA12	1/4-M12x1.5
369PTCR-4-MA16	1/4-M16x1.5
369PTCR-4-MA22	1/4-M22x1.5
369PTCR-6-MA12	3/8-M12x1.5
369PTCR-6-MA16	3/8-M16x1.5
369PTCR-6-MA22	3/8-M22x1.5
369PTCR-8-MA12	1/2-M12x1.5
369PTCR-8-MA16	1/2-M16x1.5
369PTCR-8-MA22	1/2-M22x1.5
369PTCR-10-MA12	5/8-M12x1.5
369PTCR-10-MA16	5/8-M16x1.5
369PTCR-10-MA22	5/8-M22x1.5
369PTCR-12-MA22	3/4-M22x1.5

### 369PTCSP

Clave	Medida	
369PTCSP-4-4	1/4	1/4
369PTCSP-6-4	3/8	1/4
369PTCSP-6-6	3/8	3/8
369PTCSP-6-8	3/8	1/2

### 369PTC Codo



Clave	Medida	
369PTC-4-4	1/4	1/4
369PTC-4-6	1/4	3/8
369PTC-6-2	3/8	1/8
369PTC-6-4	3/8	1/4
369PTC-6-6	3/8	3/8
369PTC-6-8	3/8	1/2
369PTC-8-4	1/2	1/4
369PTC-10-6	5/8	3/8
369PTC-10-8	5/8	1/2
369PTC-12-8	3/4	1/2
369PTC-12-12	3/4	3/4

### 372PTCSP Codo



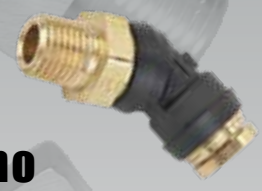
Clave	Medida	
372PTCSP-4-4	1/4	1/4
372PTCSP4-6	1/4	3/8
372PTCSP6-4	3/8	1/4
372PTCSP6-6	3/8	3/8

## VS369PTCR Conector Codo 90°



Clave	Medida	
VS369PTCR-4-2	1/4	1/8
VS369PTCR-4-4	1/4	1/4
VS369PTCR-6-4	3/8	1/4
VS369PTCR-6-6	3/8	3/8
VS369PTCR-6-8	3/8	1/2
VS369PTCR-8-6	1/2	3/8
VS369PTCR-8-8	1/2	1/2
VS369PTCR-12-8	3/4	1/2

## 379PTC Manguera Macho



Clave	Mang	Tub
379PTC-4-2	1/4	1/8
379PTC-4-4	1/4	1/4
379PTC-6-2	3/8	1/8
379PTC-6-4	3/8	1/4
379PTC-6-6	3/8	1/2
VS379PTC-6-8	3/8	1/2
379PTC-8-4	1/2	1/4
379PTC-8-6	1/2	3/8
379PTC-8-8	1/2	1/2
379PTC-10-6	5/8	3/8
VS379PTC-10-8	5/8	1/2
379PTC-12-8	3/4	1/2



## VS371PTCR Tee Lateral

Clave	Medida	
VS371PTCR-4-2	1/4	1/8
VS371PTCR-4-4	1/4	1/4
VS371PTCR-6-4	3/8	1/4
VS371PTCR-6-6	3/8	1 1/4 12MM

## 379PTCR Manguera macho O´Ring



Clave	Mang	Tub
379PTCR-6-MA12	3/8	12MM



## VS372PTCR Tee Centro

Clave	Medida	
VS372PTCR-4-2	1/4	1/8
VS372PTCR-6-4	3/8	1/4
VS372PTCR-6-6	3/8	3/8
VS371PTCR-6-4-M12	3/8	1/4

### 52PL Cruz Unión

Clave	Tubing
52PL5	5/16
52PL6	3/8

### Miniatura

Clave	Tubing
62PL2	1/8

### 164PL Tee Unión



Clave	Tubing	
164PL5/32	5/32	
164PL2	1/8	
164PL3	3/16	
164PL4	1/4	
164PL5	5/16	
164PL6	3/8	
164PL8	1/2	
164PL45	1/4	5/16
164PL46	1/4	3/6
164PL54	5/16	1/4
164PL64	3/8	1/4
164PL68	3/8	1/2
164PL86	1/2	3/8

### 68PL Conector Macho

Clave	Rosca	
	1/8	1/16 npt
68PL21	1/8	1/16 npt
68PL22	1/8	1/8 npt
68PL24	1/8	1/4 npt
68PL5/321	5/32	1/16 npt
68PL5/32-2	5/32	1/8 npt
68PL5/32-4	5/32	1/4 npt
68PL32	3/16	1/4 npt
68PL40	1/4	10-32 npt
68PL41	1/4	1/16 npt
68PL42	1/4	1/8 npt
68PL44	1/4	1/4 npt
68PL46	1/4	3/8 npt
68PL48	1/4	1/2 npt
68PL5/16-4	5/16	1/4 npt
68PL62	3/8	1/8 npt
68PL64	3/8	1/4 npt
68PL66	3/8	3/8 npt
68PL68	3/8	1/2 npt
68PL82	1/2	1/8 npt
68PL84	1/2	1/4 npt
68PL86	1/2	3/8 npt
68PL88	1/2	1/2 npt

### 62PL Unión



Clave	Tubing	
62PL64	3/8	1/4
62PL86	1/2	3/8
62PL2	1/8	
62PL3	3/16	
62PL4	1/4	
62PL5/16	5/16	
62PL5/32	5/32	
62PL6	3/8	
62PL8	1/2	
62PL10	5/8	
62PL54	5/16	1/4
62PL65	3/8	5/16

## 165PL Codo Unión 90°

Clave	Tubing
165PL2	1/8
165PL4	1/4
165PL6	3/8
165PL8	1/2

## 169PL Codo 90° Macho Giratorio

Clave	Tubing	
169PL22	1/8	1/8 npt
169PL5/322	5/32	1/8 npt
169PL5/324	5/32	1/4 npt
169PL32	3/16	1/8 npt
169PL41	1/4	1/16 npt
169PL42	1/4	1/8 npt
169PL44	1/4	1/4 npt
169PL46	1/4	3/8 npt
169PL52	5/16	1/8 npt
169PL54	5/16	1/4 npt
169PL62	3/8	1/8 npt
169PL64	3/8	1/4 npt
169PL66	3/8	3/8 npt
169PL68	3/8	1/2 npt
169PL84	1/2	1/4 npt
169PL86	1/2	3/8 npt
169PL88	1/2	1/2 npt

## 171PL Tee Macho Lateral Giratorio

Clave	Tubing	
171PL42	1/4	1/8 npt
171PL44	1/4	1/4 npt
171PL46	1/4	3/8 npt
171PL62	3/8	1/8 npt
171PL64	3/8	1/4 npt
171PL66	3/8	3/8 npt

## 172PL Tee Macho Giratorio Centro

Clave	Tubing	
172PL40	1/4	10-32 npt
172PL42	1/4	1/8 npt
172PL44	1/4	1/4 npt
172PL46	1/4	3/8 npt
172PL64	3/8	1/4 npt
172PL66	3/8	3/8 npt
172PL68	3/8	1/2 npt
172PL84	1/2	1/4
172PL88	1/2	1/2 npt
172PL88	1/2	1/2 npt

Las conexiones de plástico son adecuadas para una amplia gama de industrias, pero deben seleccionarse cuidadosamente en función de las condiciones específicas de cada aplicación.

Para aplicaciones con requisitos extremos de temperatura, presión o resistencia química, es posible que se requieran materiales alternativos más robustos.



## 68PLMM Conector Macho

Clave	Tubing	
68PLMM41	4	1/16 npt
68PLMM42	4	1/8 npt
68PLMM44	4	1/4 npt
68PLMM46	4	3/8 npt
68PLMM48	4	1/2 npt
68PLMM62	6	1/8 npt
68PLMM64	6	1/4 npt
68PLMM66	6	3/8 npt
68PLMM68	6	1/2 npt
68PLMM82	8	1/8 npt
68PLMM84	8	1/4 npt
68PLMM86	8	3/8 npt
68PLMM88	8	1/2 npt
68PLMM102	10	1/8 npt
68PLMM104	10	1/4 npt
68PLMM106	10	3/8 npt
68PLMM108	10	1/2 npt
68PLMM122	12	1/8 npt
68PLMM124	12	1/4 npt
68PLMM126	12	3/8 npt
68PLMM128	12	1/2 npt

## 164PLMM Tee Unión

Clave	Tubing	
164PLMM4	4	
164PLMM6	6	
164PLMM8	8	
164PLMM10	10	
164PLMM12	12	
164PLMM86	8	3/8

## 165PLMM Codo de Unión

Clave	Tubing
165PLMM4	4
165PLMM6	6
165PLMM8	8
165PLMM10	10
165PLMM12	12
165PLMM14	14
165PLMM16	16

## 169PLMM Codo Macho Giratorio

Clave	Tubing	
169PLMM42	4	1/8 npt
169PLMM44	4	1/4 npt
169PLMM62	6	1/8 npt
169PLMM64	6	1/4 npt
169PLMM66	6	3/8 npt
169PLMM68	6	1/2 npt
169PLMM82	8	1/8 npt
169PLMM84	8	1/4 npt
169PLMM86	8	3/8 npt
169PLMM88	8	1/2 npt
169PLMM102	10	1/8 npt
169PLMM104	10	1/4 npt
169PLMM106	10	3/8 npt
169PLMM108	10	1/2 npt
169PLMM122	12	1/8 npt
169PLMM126	12	3/8 npt



## 62PLMM Unión

Clave	Tubing	
62PLMM4	4	
62PLMM6	6	
62PLMM8	8	
62PLMM10	10	
62PLMM12	12	
62PLMM14	14	
62PLMM16	16	
62PLMM64	6	1/4
62PLMM84	8	1/4
62PLMM86	8	3/8
62PLMM106	10	3/8
62PLMM108	10	1/2
62PLMM1210	12	5/8

## 171PLMM Tee Macho Giratorio Centro

Clave	Tubing	
171PLMM42	4	1/8 npt
171PLMM44	4	1/4 npt
171PLMM62	6	1/8 npt
171PLMM64	6	1/4 npt
171PLMM82	8	1/8 npt
171PLMM84	8	1/4 npt
171PLMM86	8	3/8 npt
171PLMM88	8	1/2 npt
171PLMM104	10	1/4 npt
171PLMM106	10	3/8 npt
171PLMM126	12	3/8 npt

## 89PLMM Conector Union "Y"

Clave	Tubing
APY4	4
APY6	6
APY8	8
APY10	10
89PLMM16	16

## 368 CONEXION "Y" PLÁSTICA

Clave	Tubing	
368PL44	1/4	1/4
368PL46	1/4	3/8
368PL64	3/8	1/4
368PL66	3/8	3/8

## 172PLMM Tee Macho Giratorio Centro

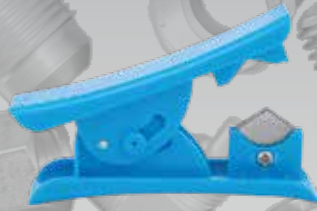
Clave	Tubing	
172PLMM42	4	1/8
172PLMM64	6	1/4
172PLMM66	6	3/8
172PLMM84	8	1/4
172PLMM86	8	3/8
172PLMM88	8	1/2
172PLMM106	10	3/8
172PLMM108	10	1/2
172PLMM126	12	3/8

## 368PLMM "Y" Macho Giratorio Centro

Clave	Tubing	
368PLMM84	8	1/4 npt
368PLMM86	8	3/8 npt

## Cortador Tubing Nylon

Clave
T-CUT



## DC604 Conexión Bronce Grifo Mariposa



Clave	Medida	
DC6042	1/4	1/8
DC604-4	1/4	1/8
DC6046	1/4	3/8
DC6048	1/4	1/2

## Purgador de Tanque de Tirón



Clave	Medida
W-12105	M22x1.5

## Silenciador



Clave	Medida
BSLM 01	1/8
BSLM 02	1/4
BSLM 03	3/8
BSLM 04	1/2
BSLM 06	3/4

## DC603 Grifo de Drenado Reforzado



Clave	Medida	
DC603-4	1/4	1/4
DC603-6	1/4	3/8

## Conexión Bronce para Frenos Resorte AB0606

Clave	Rosca	Manguera
AB0604PR94	3/8	1/4
AB0606PR94	3/8	3/8
AB0608PR94	3/8	1/2

## Conexión Bronce para Frenos sin Resorte

Clave	Rosca	Manguera
AB0604PR	3/8	1/4
AB0606PR	3/8	3/8
AB0608PR	3/8	1/2

## Conector Macho Reusable Frenos de Aire

Clave	Rosca	Manguera
AC0604MB	3/8	1/4
AC0606MB	3/8	3/8
AC0608MB	3/8	1/2

## Barril Castelado

Clave	Manguera
AB0673	3/8

## Adaptador Conectores Frenos de Aire

Clave	Rosca
76RB 3/4 4	3/4 - 1/4
76RB 3/4 6	3/4 - 3/8
76RB 3/4 8	3/4 - 1/2

## Union p/frenos

Clave	Manguera
AB62-06	3/8

## Conexión Hembra Para Frenos Reusable

Clave	Rosca	Manguera
AC0608RU	3/8	1/2

## Tuerca de barril Castelado

Clave	Rosca	Manguera
61RB6	3/8	1/2



Clave	Medida 1	Medida 2
W-V404P-10-8	5/8	1/2



Clave	Medida 1	Medida 2
W-V404P-6-6	3/8	3/8



Clave	Medida 1	Medida 2
W-V404P-10-6	5/8	3/8



Clave	Medida 1	Medida 2
W-V409F108	5/8	1/2
W-V409F88	1/2	1/2



Clave	Medida 1	Medida 2
W-V404P-12-6	3/4	3/8



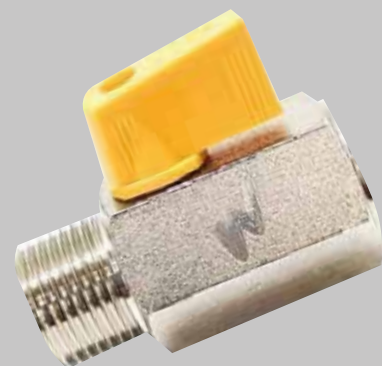
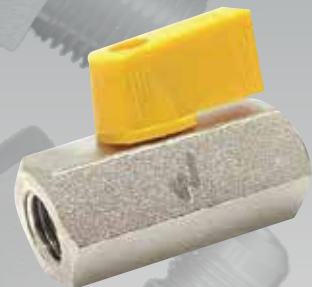
Clave	Medida 1	Medida 2
W-V412F108	5/8	1/2

Clave	Medida 1	Medida 2
W-MV609-2-2	1/8	1/8
W-MV609-4-4	1/4	1/4

Clave	Medida 1	Medida 2
W-MV609-6-6	3/8	3/8

Clave	Medida 1	Medida 2
W-MV609-8-8	1/2	1/2

Clave	Medida 1	Medida 2
W-MV608-4-4	1/4	1/4
W-MV608-6-6	3/8	3/8
W-MV608-8-8	1/2	1/2



# GRUPO TRH

THE BUSINESS  
JOIN BETTER<sup>®</sup>



## ALLENDE

Hidalgo 408, Col. Centro  
Allende NL, C.P #67350

(826) 268 2800

(826) 268 4723

## MONTERREY

Nogal 3408  
Jardines de San Rafael  
Guadalupe NL

(81) 8377 1114

(81) 8377 6265



[www.trh.com.mx](http://www.trh.com.mx)



¡CONTÁCTA CON NOSOTROS!

✉ [ventas@trh.com.mx](mailto:ventas@trh.com.mx)

